

# **PELICAN™ 1700 CASE GENERATION 2**

TECH BULLETIN | 07/07/22

DESIGNED IN

U S A

SINCE 1976



## 1700 GEN 2

## 1700 GEN 1

### MATERIAL NUMBERS

017000-0000-XXX (with Foam)  
017000-0010-XXX (with No Foam)

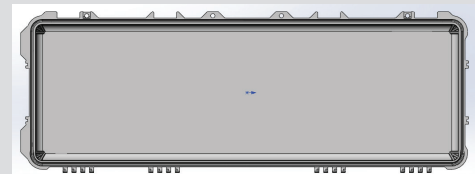
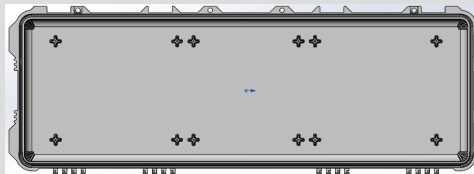
1700-000-XXX (with Foam)  
1700-001-XXX (with No Foam)

### DIMENSIONS (L X W X H)

Ext: 38.47" x 16.42" x 6.14"  
Int: 35.76" x 13.73" x 5.35"

Ext: 38.12" x 16.00" x 6.12"  
Int: 35.75" x 13.50" x 5.25"

### BOSSES ADDED INSIDE THE LID



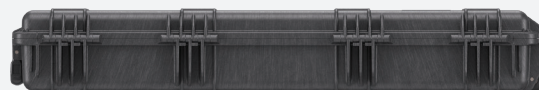
### NEW FOLDING OVERMOLDED HANDLE



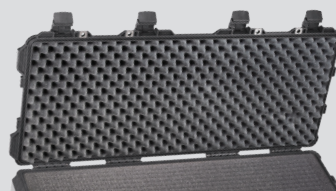
### WIDER WHEEL PLACEMENT AND NEW END HANDLE



### RIBS MODIFIED ON THE BACK



### CONVOLUTED LID FOAM



Pelican Products, Inc.

23215 Early Avenue, Torrance, CA 90505

Tel (310) 326-4700 • Toll Free (800) 473-5422

PELICAN.COM

All trademarks are registered and/or unregistered trademarks of Pelican Products, Inc., its subsidiaries and/or affiliates.

© 2022 Pelican Products, Inc.

**GUARANTEED FOR LIFE**  
SEE [PELICAN.COM/WARRANTY](https://www.pelican.com/warranty) FOR FULL DETAILS



# **PELICAN™ 1720 CASE GENERATION 2**

TECH BULLETIN | 07/07/22

DESIGNED IN

U S A

SINCE 1976



## 1720 GEN 2

## 1720 GEN 1

### MATERIAL NUMBERS

017200-0000-XXX (with Foam)  
017200-0010-XXX (with No Foam)

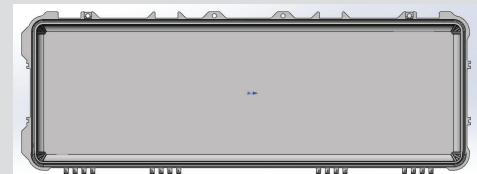
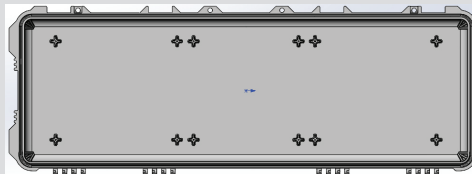
1720-0000-XXX (with Foam)  
1720-0010-XXX (with No Foam)

### DIMENSIONS (L X W X H)

Ext: 44.48" x 16.07" x 6.25"  
Int: 41.8" x 13.58" x 5.33"

Ext: 44.37" x 16" x 6.12"  
Int: 42" x 13.5" x 5.25"

### BOSSES ADDED INSIDE THE LID



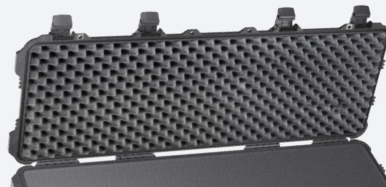
### OVERMOLDED HANDLES ON BOTH ENDS



### HANDLE NOW OVERMOLDED



### CONVOLUTED LID FOAM



Pelican Products, Inc.  
 23215 Early Avenue, Torrance, CA 90505  
 Tel (310) 326-4700 • Toll Free (800) 473-5422

[PELICAN.COM](http://PELICAN.COM)

All trademarks are registered and/or unregistered trademarks of Pelican Products, Inc., its subsidiaries and/or affiliates.  
 © 2022 Pelican Products, Inc.

**GUARANTEED FOR LIFE**  
SEE [PELICAN.COM/WARRANTY](http://PELICAN.COM/WARRANTY) FOR FULL DETAILS



# **PELICAN™ 1750 CASE GENERATION 2**

TECH BULLETIN | 07/07/22

DESIGNED IN

U S A

SINCE 1976



## 1750 GEN 2

## 1750 GEN 1

### MATERIAL NUMBERS

017500-0000-XXX (with Foam)  
017500-0010-XXX (with No Foam)

1750-000-XXX (with Foam)  
1750-001-XXX (with No Foam)

### DIMENSIONS (L X W X H)

Ext: 56.06" x 16.05" x 6.13"  
Int: 50.38" x 13.33" x 5.33"

Ext: 53" x 16" x 6.12"  
Int: 50.5" x 13.5" x 5.25"

### BOSSES ADDED INSIDE THE LID



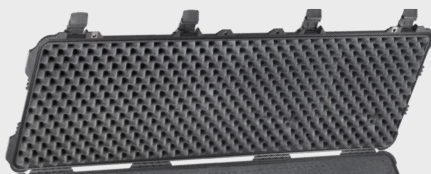
### WHEELED SIDE HANDLE ADDED



### HANDLE NOW OVERMOLDED



### CONVOLUTED LID FOAM



Pelican Products, Inc.

23215 Early Avenue, Torrance, CA 90505

Tel (310) 326-4700 • Toll Free (800) 473-5422

PELICAN.COM

All trademarks are registered and/or unregistered trademarks of Pelican Products, Inc., its subsidiaries and/or affiliates.

© 2022 Pelican Products, Inc.

**GUARANTEED FOR LIFE**  
SEE [PELICAN.COM/WARRANTY](https://www.pelican.com/warranty) FOR FULL DETAILS